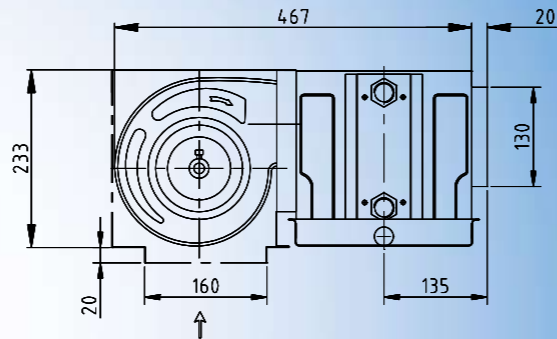
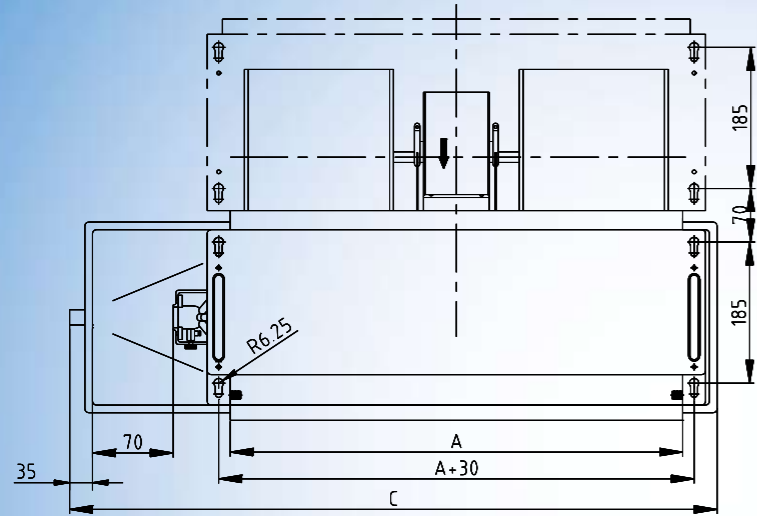
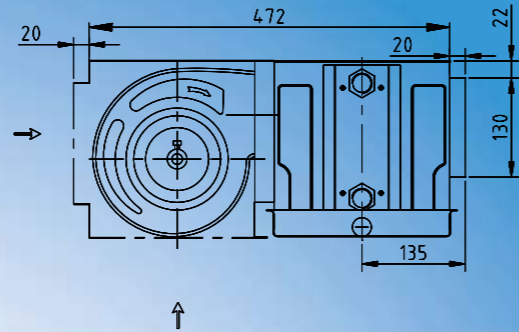
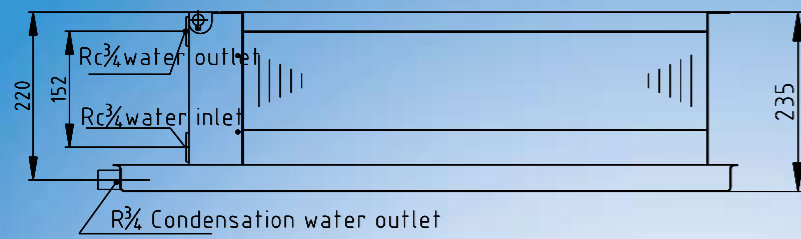


OVERALL DIMENSIONS



Model	A	C	Fan notor	Water outlet	Water inlet	Condenser water
FP-3.4	406	710	1	DN20	DN20	DN20
FP-5.1	600	910	2	DN20	DN20	DN20
FP-6.8	700	960	2	DN20	DN20	DN20
FP-8.5	780	1060	2	DN20	DN20	DN20
FP-10.2	920	1230	2	DN20	DN20	DN20
FP-13.6	1060	1400	3	DN20	DN20	DN20
FP-17.0	1278	1530	4	DN20	DN20	DN20
FP-20.4	1387	1630	4	DN20	DN20	DN20
FP-23.8	1496	1730	4	DN20	DN20	DN20



Fan Coil Units

LAFCU 34-238

Air Flow: 340-2380m³/h
Cooling: 1458-1300W
Heating: 656-21290W



The FCU series water chilled fan coil units are designed specially to meet the varied requirements of zone cooling or heating using chilled water or hot water. Fan coil can be applied to two pipe 3 rows or 4 rows systems to satisfy the requirements of a wide variety of air conditioning or heating application. The FCU series is available in concealed versions for ceiling installation. This unit is presented as a single block including: fan deck, cooling or heating coil, removable filter, drip tray, electrical connection box.

FEATURES

FRAME AND STRUCTURE

Panels and frame are made of heavy gauge galvanized steel, properly punched and punched for fixing both accessories and the unit itself.

HEATING COIL

The coils are made of seamless tubes expanded into aluminum fins in continuous block. The connections have brass headers with female fittings and provided with easily accessible vent and drainage valve.

FAN DECK

The fan decks are composed of double suction centrifugal fans with metal impellers and 3-speed fan motors. Each fan motor assembly is dynamically balanced.

DRIP TRAY

The drip trays are made from sheet metal treated with polyester powder coating to ensure total resistance to atmospheric agents.

FILTER

The easily removable filter is made of filtering honeycomb nylon washable filter and supported by metal frame. The filter is installed on the units with plenum only.

ELECTRICAL CONNECTION BOX

All electric wires are connected to enclosed electrical terminal block, situated on the same side of the water connections.

OPTIONAL

- on-board thermostat and Remote thermostat
- electric heater
- return air box
- balancing valve

NOMENCLATURE

LA FCU N E F B 51 M

① ② ③ ④ ⑤ ⑥ ⑦ ⑧

- ① LA: ATD air product
- ② Fan coil
- ③ Installation method:
L: with supporting legs
N: without supporting legs
- ④ Unit version
C: Concealed version
E: Exposed version with plastic covers

- ⑤ Air intake:
F: Front air intake
O: Underside air intake
- ⑥ Coil type
A: 2 pipe 2 rows
B: 2 pipe 3 rows
C: 2 pipe 4 rows
D: 4 pipe 2+1 rows
E: 4 pipe 3+1 rows
F: 4 pipe 3+2 rows

- ⑦ Air flow
- ⑧ External static pressure
--: Standard
M: Medium static pressure (30Pa)
H: High static pressure (50Pa)

The technical data in this documents are not binding. ATD air reserves the right to make whatever modifications it deems necessary to improve the product at any time.

CTA International Group Pty Ltd
65-67 Sheehan Road Heidelberg West Vic 3081
Tel: 03-94553991 Fax: 03-94553992
E-mail: info@atd.net.au www.atd.net.au

TECHNICAL DATA 2 ROWS and 2+1 ROWS

Item		Model	3.4	5.1	6.8	8.5	10.2	13.6	17.0	20.4	23.8
Air flow (m3/h)	High		410	550	750	900	1060	1500	1800	2110	2700
	Mid		340	450	600	730	820	1230	1480	1730	2210
	Low		260	350	470	560	640	950	1120	1360	1750
cooling capacity *	W		2050	2820	3740	4500	5230	7500	8300	10350	11510
Heating capacity*	W		3480	4700	6260	7500	8720	12490	13830	17250	19190
Power supply	V/PH/HZ	220/1/50									
Input power (W)	12Pa		33	32	60	82	94	134	152	189	250
	30Pa		40	54	72	92	112	156	180	215	280
	50Pa		49	65	84	105	122	184	210	248	310
Noise level dB(A)	12Pa		37	36	39	43	45	46	48	49	51
	30Pa		38	39	43	45	46	47	48	49	51
	50Pa		41	43	45	47	49	50	51	52	52
Fan	type	Centrifugal type									
	quantity		1	2	2	2	2	3	4	4	4
	material		metal	metal	metal	metal	metal	metal	metal	metal	metal
Water flow (l/min)		6	8	11	13	15	21.5	24	30	33	
Water flow (l/h)		360	480	660	780	900	1290	1440	1800	1980	
Pressure drop (kPa)		10	16	26	16	22	28	32	40	38	
Net weight		13	14.5	16.5	17.8	19	26.5	29	33	39	
Coil		2 rows/1.6MPa									
Connection dim.		3/4' (inner grooved)									
Condensing water outlet	connecting	DN20 steel pipe									
		Ø9.52 welding copper pipe									
Terminal block placement		Other side of water inlet/outlet									

Note: 1. high speed with pressure
2. Cooling capacity: water inlet 7 °C difference in temperature 5 °C DB27 °C/WB19.5 °C
Heating capacity: water inlet 60 °C DB21 °C

ELECTRIC DATA

MODE	pressure	3.4	5.1	6.8	8.5	10.2	13.6	17	20.4	23.8
Input power W	12Pa	33	32	60	82	94	134	152	189	250
	30Pa	40	54	72	92	112	156	180	215	280
	50Pa	49	65	84	105	122	184	210	248	310
Load current A	12Pa	0.15	0.15	0.27	0.37	0.43	0.61	0.69	0.86	1.14
	30Pa	0.18	0.25	0.33	0.42	0.51	0.71	0.82	0.98	1.27
	50Pa	0.22	0.3	0.38	0.48	0.55	0.84	0.96	1.13	1.41
Power supply	V/Ph/Hz	220/1/50								

3 ROWS and 3+1 ROWS

Item		Model	3.4	5.1	6.8	8.5	10.2	13.6	17.0	20.4	23.8
Air flow (m3/h)	High		340	510	680	850	1020	1360	1700	2040	2380
	Mid		280	420	560	690	830	1100	1390	1670	1950
	Low		220	330	440	540	660	850	1080	1300	1540
cooling capacity	W		2300	3200	4250	4720	5900	8150	9460	11600	13000
Heating capacity	W		3905	5330	7080	7870	9840	13570	15490	18640	21290
Power supply	V/PH/HZ	220/1/50									
Input power (W)	12Pa		32	31	58	76	91	130	150	180	208
	30Pa		41	52	65	87	106	150	172	210	250
	50Pa		48	63	82	100	118	174	205	236	290
Noise level dB(A)	12Pa		37	36	39	43	45	46	48	49	49
	30Pa		38	39	42	45	46	47	48	49	50
	50Pa		41	43	45	47	49	50	51	51	51
Fan	type	Centrifugal type									
	quantity		1	2	2	2	2	3	4	4	4
	material		metal	metal	metal	metal	metal	metal	metal	metal	metal
Water flow (l/min)		6.6	9	12.3	13.8	17	23.5	27	33	37	
Water flow (l/h)		396	540	738	828	1020	1410	1620	1980	2220	
Pressure drop (kPa)		14	25	20	24	35	35	40	40	47	
Net weight			14	15.6	17.7	19.1	20.5	28.3	31	35.3	41.5
	VE		23.9	28.4	31.6	34.9	38.2	45	51.7	---	---
	VC		15.2	17.8	20	22.1	24.3	30.1	34.7	39	----
	WE		23.3	27.8	31	34.3	37.6	44.4	51.1	---	----
	WC		15.2	17.8	20	22.1	24.3	30.1	34.7	39	----
Coil		3 rows/1.6MPa									
Connection dim.		3/4' (inner grooved)									
Condensing water outlet	connecting	DN20 steel pipe									
		Ø9.52 welding copper pipe									
Terminal block placement		Other side of water inlet/outlet									

Note: 1. high speed with pressure 2. Cooling capacity: water inlet 7 °C difference in temperature 5 °C DB27 °C/WB19.5 °C Heating capacity: water inlet 60 °C DB21 °C

ELECTRIC DATA

MODE	pressure	3.4	5.1	6.8	8.5	10.2	13.6	17	20.4	23.8
Input power W	12Pa	32	31	58	76	91	130	150	180	208
	30Pa	41	52	65	87	106	150	172	210	250
	50Pa	48	63	82	100	118	174	205	236	290
Load current A	12Pa	0.15	0.14	0.26	0.35	0.41	0.59	0.68	0.82	0.95
	30Pa	0.19	0.24	0.3	0.4	0.48	0.68	0.78	0.96	1.14
	50Pa	0.22	0.29	0.37	0.46	0.54	0.79	0.93	1.07	1.32
Power supply	V/Ph/Hz	220/1/50								