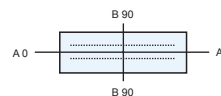
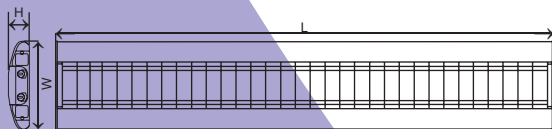
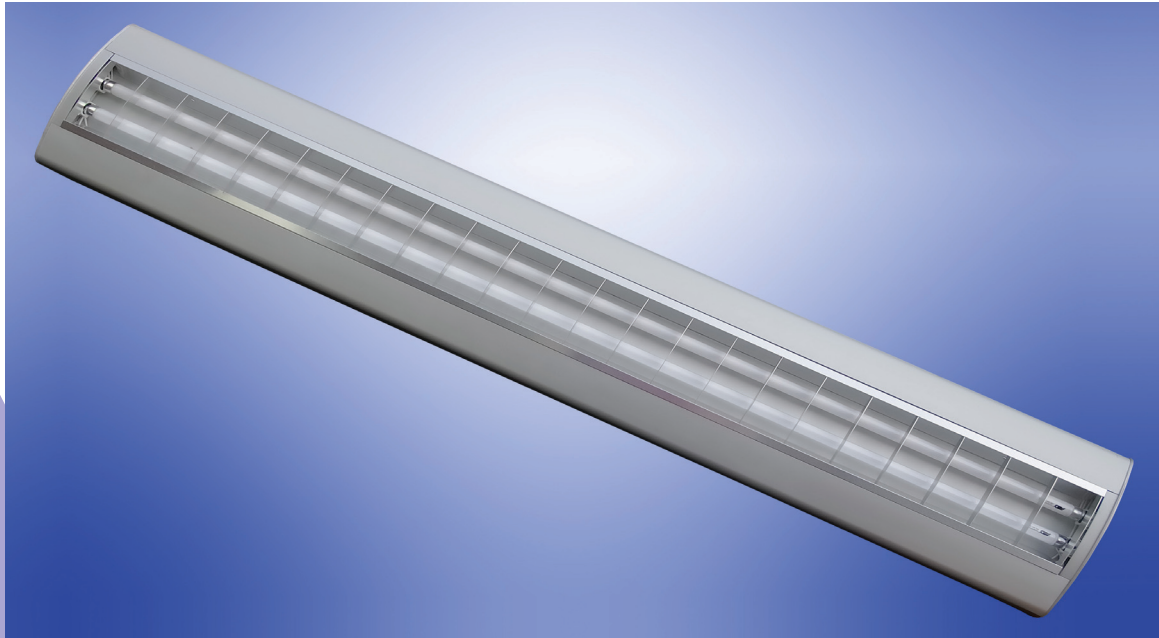


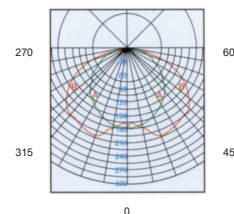
T5 - ENERGY LIGHTS



AMX1 Series



Polar Curve I (cd/1000 lm)



ATD T5 high efficiency linear fluorescent lamps are a new generation of light source. Combining the latest phosphor technology for reduced lumen depreciation for long life operation, higher colour temperature operation with a higher luminaire light output ratio, bringing a much brighter more natural colour light. Electronic ballasts with low energy losses are used to provide the highest luminaire efficiency. The diameter of the new T5 lamps is only 16mm (5/8 inch) compared to the older T8 lamps 26mm (8/8 inch). However the smaller size produces 30% higher brightness when compared to a T8 tri-phosphor tube.

Model No: AMX1

Lamp: 2x28W

Materials: Main luminaire body is extruded aluminium, the surface of which is anode-oxidised. End-caps are die-cast aluminium, and the louver uses imported semi-specular aluminium.

Description: Luminaire body is fully parabolic, and arched semi-specular blades provide well distributed light output. The combination of quality louver materials and a highly engineered design assures no iridescence but higher reflectivity.

Application: Widely applicable to luxurious hotels, classrooms, shopping centres, and office buildings.

Mounting: Surface mounting

Model No.	Wattage (W)	Luminaire Dimensions (mm)			Mounting Space (mm)	Master Carton (mm)			Qty in One Carton (PCS)
		L	W	H		L	W	H	
AMX1-Y28X2	2X28	1182	210	52	1055X105	1225	255	145	2



CTA Interenergy PTY. LTD

P.O. Box 338, Rosanna, Victoria 3084, Australia
 Tel: (61-3) 9455-3991 Fax: (61-3) 9455-3992
 web:ww.atd.net.au email:sales@atd.net.au

Distributed by: