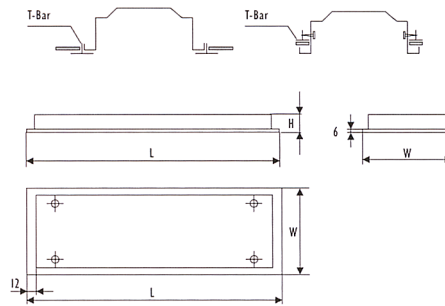
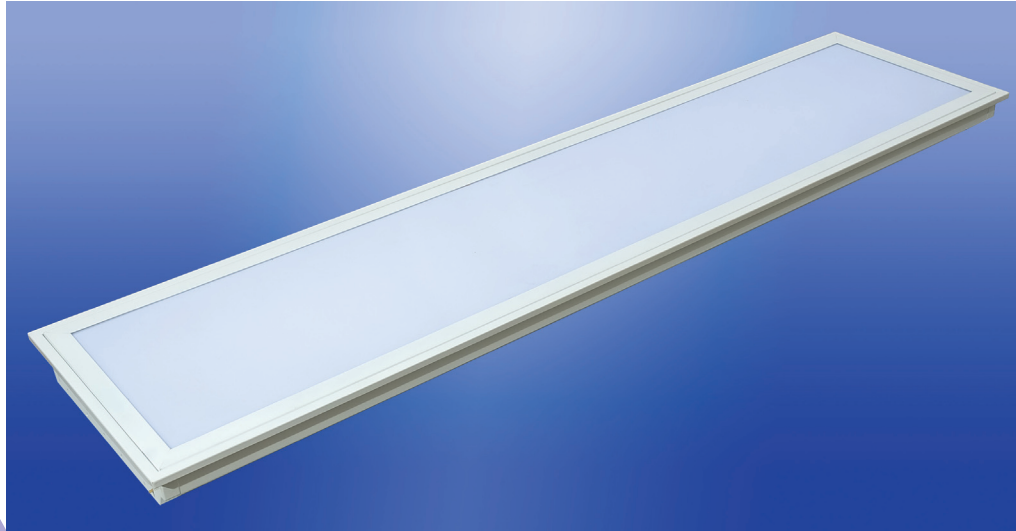


T5 - ENERGY LIGHTS



AMQ5 Series



ATD T5 high efficiency linear fluorescent lamps are a new generation of light source. Combining the latest phosphor technology for reduced lumen depreciation for long life operation, higher colour temperature operation with a higher luminaire light output ratio, bringing a much brighter more natural colour light. Electronic ballasts with low energy losses are used to provide the highest luminaire efficiency. The diameter of the new T5 lamps is only 16mm (5/8 inch) compared to the older T8 lamps 26mm (8/8 inch). However the smaller size produces 30% higher brightness when compared to a T8 tri-phosphor tube.

Model No: AMQ5

Lamp: 2x28W

Materials: The luminaire body is based on Pre-coated zinc-plated steel, and the louvers are in fog white or use clear PS materials with high reflectivity.

Features: Luminaires are made automatically with super-thin electronic zinc-plated steel. It is more caner durable than common baked lacquer and the lighting function is up to international environment protection. The luminaire body is designed for easy installation and maintenance.

Application: Widely used in places requiring the lighting of large areas, such as hospitals and shops.

Mounting: Suitable for recessed mounting.

Model No.	Wattage (W)	Luminaire Dimensions (mm)			Mounting Space (mm)		Master Carton (mm)			Qty in One Carton (PCS)
		L	W	H	Surface Mounting	Recessed Mounting	L	W	H	
AMQ5-Y28X2	2X28	1196	296	51.2	112X140	1175X275X52	1220	310	235	4



CTA Interenergy PTY. LTD

P.O. Box 338, Rosanna, Victoria 3084, Australia
 Tel: (61-3) 9455-3991 Fax: (61-3) 9455-3992
 web:ww.atd.net.au email:sales@atd.net.au

Distributed by: